



Engaging Sustainability

2014 Annual Conference

Penn State University

The Pennsylvania Environmental Resource Consortium is made possible by its dues-paying Member Institutions and the following Sponsors. We deeply appreciate their support.

Sustaining Annual Sponsor



Gold Annual Supporters



Silver Annual Supporter



AGENDA

Engaging Sustainability

Fall Conference & Annual Meeting

8:00-9:00am	Check-in, tour sign up, light refreshments, networking
9:00-9:15am	Conference begins, opening remarks
9:15-9:25am	► Host Institution Spotlight-PSU's Sustainability Institute
9:25-10:15am	◆ PANEL ENGAGING SUSTAINABILITY IN THE COMMUNITY
10:15-11:00am	◆ PANEL: THREE CAMPUSES, THREE SOLUTIONS PA HIGHER EDUCATION FOOD RECOVERY CHALLENGE
11:00-12:00m	◆ KEYNOTE SPEECH: MICHAEL MANN "THE HOCKEY STICK AND THE CLIMATE WARS: THE BATTLE CONTINUES"
12:00-12:45pm	Lunch, networking
12:30- 1:20pm	◆ POSTER SESSION
1:20-1:35pm	► PERC business-Elections, bylaws
1:35-1:45pm	► Host Organization: Penn State's Net Impact Undergraduate Chapter
1:45-1:55pm	► Sponsor Spotlight: Pace Controls
1:55-2:45pm	◆ PANEL: ENGAGING SUSTAINABILITY ON CAMPUS
2:45-3:05pm	► NETWORKING / COFFEE / DESSERT
3:05-3:55pm	◆ PANEL: CAMPUS SUSTAINABILITY CHAMPIONS
3:55-4:00pm	Closing Remarks

Gratitude

Thanks to our hosts: Penn State's Sustainability Institute and PSU's Net Impact Undergraduate Chapter. Thanks especially to Susannah Barsom of the Sustainability Institute and Amy Hopf of PSU's Net Impact Undergraduate Chapter, both of whom worked tirelessly to make this conference happen. Thanks also to Tim Hawkins (Shippensburg) and Rich Bowden (Allegheny) for chairing the panel recruitment and selection committees and to the entire Executive Committee and all the speakers for giving so generously of their time.

Panels (◊) & Sessions (▶)

Speaker bios can be found later in the packet.

9:00-9:15am ▶ **WELCOME AND INTRODUCTION**

Josh Hooper, *PERC*

9:15-9:25am ▶ **HOST INSTITUTION SPOTLIGHT**

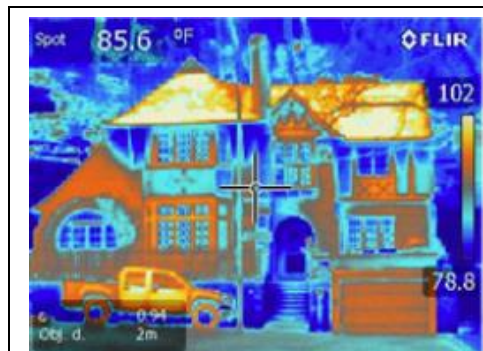
Erik Foley, *Managing Director, Penn State Sustainability Institute*

9:25-10:15am ◊ **PANEL: ENGAGING SUSTAINABILITY IN THE COMMUNITY**

Many higher education institutions find it their responsibility to connect with the communities they inhabit and find ways, large and small, to fan the flame of sustainability beyond their campuses. This panel looks at some of the work being done in this area.

- **Jenny Wittann & Joshua Lewis, Chatham University:** The Master of Sustainability program relies heavily on out- of-the-classroom projects. One example: implementing sustainability with the **Pittsburgh for Creative Reuse**.
- **Peter Buckland, Penn State:** Community outreach on changing the moral climate on climate change.

- **Anthony Magliozzi, Penn State:**
The National Energy Leadership Corps (NELC) couples leadership development experiences for students with free home energy assessments in their local communities.
- **Jessica Wallace, Shippensburg:**
The Shippensburg University Farm educates students and engages members of the broader community in sustainability education.



Thermal image from NELC

10:15-11:00am ♦ **PANEL: THREE CAMPUSES, THREE SOLUTIONS PA HIGHER EDUCATION FOOD RECOVERY CHALLENGE**

On the surface, Franklin and Marshall, Keystone and Messiah all face the same challenge that many colleges do--what to do with their post-consumer food waste. Each school has come up with a different answer.

- **Tom Simpson, Franklin & Marshall College.** F&M has their waste hauled for off-site composting, some of which is returned to campus.
- **Craig Dalen, Messiah College**
Circumstances at Messiah make on-campus composting practical.
- **Patricia Lione, Keystone College** Keystone processes their food through a digester called an Orca.



Food waste going into
Keystone's digester

Find out how each of these three campuses made the choice that best fit their unique situation.

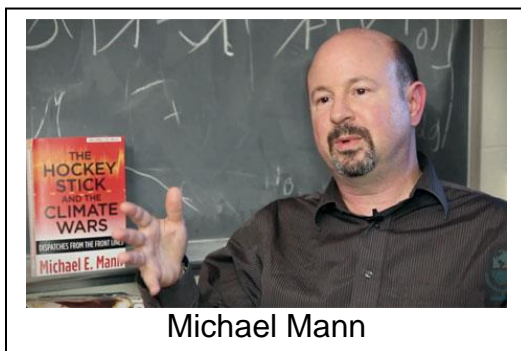
11:00-12:00m ► **KEYNOTE ADDRESS**

Michael Mann

Distinguished Professor of Meteorology

Director, Earth System Science Center, Penn State University

Michael will present "*The Hockey Stick and the Climate Wars: The Battle Continues*," focusing on his engagement in the climate change debate,



Michael Mann

including the the science, impacts, politics and ethical dimensions of human-caused climate change. Michael is the author of "The Hockey Stick and the Climate Wars: Dispatches from the Front Lines" (2012) and "Dire Predictions: Understanding Global Warming" (2008) as well as over 170 peer-reviewed and edited publications. The question and answer session

following Michael's talk gives PERC audience members a chance to engage with him personally.

12:00-12:45pm **LUNCH / NETWORKING**

12:30- 1:20pm ► **SUSTAINABILITY POSTER SESSION**

PERC's Call for Posters resulted in 26 submissions. Attendees are asked to give feedback on the posters on display.

Brittany Prischak, Poster Session *Committee Chair*.

Other Committee members: Kelly Boulton, Allegheny College; Elly Engle, Penn State; Ann Quinn, Penn State, Erie and Sue Barsom, Penn State.

(Displayed posters will be encapsulated on PERC's website.)

1:20-1:35pm ► **PERC UPDATE AND BUSINESS**

Josh Hooper, *PERC*

1:35-1:45pm ► **HOST HIGHLIGHT**

Penn State's Net Impact Undergraduate Chapter

1:45-1:55pm ► **SPONSOR SPOTLIGHT**

Tom Mills, *PaceControls*.

1:55-2:45pm ♦ **PANEL: ENGAGING SUSTAINABILITY ON CAMPUS**

- **TJ, Eatmon**, Allegheny College: The Food for Sustainability project utilizes aquaponic systems for indoor, **year round production of tilapia and lettuce** that blends faculty-student research and service learning with service learning.
- **Allen Landis**, Villanova: Nova Bike Share is program that connects students with **bikes and the community**--teaching job skills to the handicapped and consulting on local bike lanes.
- **Erik Foley, Penn State**: The Sustainability Institute led an effort to integrate sustainability into every college, campus and support unit across the PSU system. Find out the **value of integrating sustainability into the strategic planning** and assessment process.
- **Sadie Stuart**, Allegheny: The **Carbon Conference project** examines environmental and financial costs of the Allegheny softball team's current participation in the NCAC, as well as costs incurred in a new theoretical conference (the Carbon Conference) that would be constructed based on similarity of schools and reduction in travel among participants.

2:45-3:05pm ► **NETWORKING / COFFEE / DESSERT**

3:05-3:55pm ♦ **PANEL: CAMPUS SUSTAINABILITY CHAMPIONS**

- **Helen Takacs**: *Professor, Business, Dickinson College.* Incorporating sustainability into the business curriculum, including climate change and sustainable entrepreneurship.
- **Lynette Dooley**, Student, **Lycoming College**. Senior biology major, Sustainability Committee, co-founded Lycoming chapter of Food Recovery Network and Terracycle projects.
- **Nick Iula**, Director, Dining Services, **Shippensburg University**. Sustainable dining projects, including Project Clean Plate, composting, donation, campus farm, Healthy Eating Adventure.
- **Josh and Zach Berliner**, Students, **Bucknell University**. Bucknell Green Fund, occupancy sensors, LED deployment, water saving, recycling, 2015 PERC Student Sustainability Symposium
- **Liesel Schwartz**, Sustainability Manager, **Villanova University**
- **Mariah Murphy**, Student, **Dickinson College**. Biking @ Dickinson, including bicycle cooperative, bike indoor bike storage, Bike to Farm Potlucks, Biking @ Dickinson blog, online bike rack map.

3:55-4:00pm ► **CLOSING REMARKS**

Josh Hooper, PERC

PERC Business Session

Executive Committee Nominees

The Executive Committee is PERC's essential leadership body, giving overall strategic direction to the organization as well as advising on ongoing and tactical matters. Each nominee serves a two year term and may stand for re-election if they so choose. Executive Committee members are elected by the board of governors at PERC's Annual Meeting.

Name		Institution
Returning member		
Brittany Prischak	Sustainability Officer	Mercyhurst University
New Nominees		
Ryan Adams	Assistant Professor, Anthropolgy; Co-Chair, Sustainability Committee	Lycoming College
Dina El-Mogazi	Director, Sustainable Design Program; Adjunct Professor, Environmental Studies	Bucknell University
Liesel Schwartz	Sustainability Manager	Villanova University
Tom Simpson	Sustainability Coordinator	Franklin & Marshall

2014-2015 Executive Committee Officer Nominees

(One year term)

Executive Committee officers are elected by Executive Committee members. The people listed below have been nominated and agreed to serve.

President...	Brittany Prischak, Mercyhurst University
Immediate Past President	Neil Leary, Dickinson College
President Elect	Susannah Barsom, Penn State University
Treasurer	Timothy Hawkins, Shippensburg University
Secretary	Kathleen Schreiber, Millersville University

Bylaws

A proposed change in the bylaws will be voted on. Currently the bylaws allow for the Executive Committee to be composed only of PERC Member Institution representatives. The proposed change would allow the PERC rep to designate someone else from their campus to serve on the committee.

Existing language...

The Executive Committee shall contain up to fourteen members of the Board of Governors elected by the Board of Governors. Nomination for election to the Executive Committee may be made by any Governor orally or in writing at or before the meeting where such election is held. The Board of Governors shall seek to achieve diversity in race, gender, academic discipline, and institutional type on the membership of the Executive Committee. Additional to the six, the Executive Committee may include representatives from the Department of Environmental Protection and the PA Department of Conservation and Natural Resources. The Executive Committee shall elect those who will serve it and the Board as Officers. Members of the Executive Committee shall serve for two years. Officers shall serve for one year; however, the Executive Committee may fill any unexpired term of an Officer with an Executive Committee member who may then seek election for a full year as an Officer. The Executive Committee may also fill any unexpired term of the Executive Committee with any member of the Board of Governors.

Proposed language...

The Executive Committee shall contain up to fourteen members of the Board of Governors or his or her nominee, who shall be elected by the Board of Governors. Nomination for election to the Executive Committee may be made by any Governor orally or in writing at or before the meeting where such election is held. Any member of the Board of Governors may nominate an associate of his or her institution to represent the institution on the Executive Committee. The Board of Governors shall seek to achieve diversity in race, gender, academic discipline, and institutional type on the membership of the Executive Committee. Additional to the fourteen, the Executive Committee may include representatives from the Department of Environmental Protection and the PA Department of Conservation and Natural Resources. The Executive Committee shall elect those who will serve it and the Board as Officers. Members of the Executive Committee shall serve for two years. Officers shall serve for one year; however, the Executive Committee may fill any unexpired term of an Officer with an Executive Committee member who may then seek election for a full year as an Officer. The Executive Committee may also fill any unexpired term of the Executive Committee with any member of the Board of Governors.

PERC's full Bylaws document is available online...

http://www.pagreencolleges.org/Org_docs

Speaker Information

(Listed alphabetically by speaker's last name)

Josh Berliner

Student

Bucknell University

I'm from Livingston, NJ and I am currently a senior at Bucknell University double majoring in Environmental Studies and Economics. I have a deep passion for sustainability issues that stems from a teacher I had in high school, who really opened my eyes to these issues and to how truly desperate these issues are for leadership. I have been co-president of the Bucknell Environmental Club (along with my brother Zach) for the past year and a half and we have been able to host multiple events, vastly expand our Terracycle operation on campus, more than double the size of the club, and pursue other ventures to make an impact at Bucknell. Additional efforts I've been involved in include conducting research on Bucknell's water fixtures and how the campus uses (and wastes) water, helping to organize Bucknell's Sustainability Symposium, and completing multiple projects to make the campus greener (motion-sensor lighting, LED lighting, and more efficient water fixtures).

Zach Berliner

Student

Bucknell University

I am a senior Economics and Environmental Studies double major at Bucknell University from Livingston, NJ. I am particularly interested in the intersection of economic analytical tools and our relationship with the natural world so as to envision a more sustainable future. This interest led me to become involved with multiple sustainability efforts on Bucknell's campus including a comprehensive assessment of Bucknell's recycling system, Campus Green Fund projects (which involved multiple energy- and money-saving lighting retrofits), and the annual Sustainability Symposium, among other activities. I also (along with my brother Josh) co-lead the Bucknell Environmental Club, which has been a powerful vehicle for student-led action that has manifested in visible, tangible impacts on campus. I am an avid jazz saxophone player and listener, and enjoy both on and off campus.

Peter Buckland

Co-Host, Sustainability Now Radio

Penn State University

Peter Buckland is an outspoken sustainability advocate. He has co-led the charge for a Community and Environmental Bill of Rights in State College and

pushed for sensible policies on shale gas drilling, land use, energy conservation, and climate policy. He has collaborated with Dan Kahan of the Yale Law School, Marc McCaffrey of the National Center for Science Education, and faculty at Penn State including Drs. Janet Swim and Michael E. Mann on initiatives to educate the public about climate change. On November 7th, he defended his dissertation *The Unsuspected Teachers: Environmental Identity and Sustainability Education in the Anthropocene*.

Craig Dalen
Director of Sustainability
Messiah College

Craig Dalen serves as first-ever Director of Sustainability at Messiah College, where he conceptualized and launched the Office of Sustainability. He combines graduate study in organizational development with 11 years of experience leading mission-driven program development to enhance student learning and drive institutional sustainability efforts. Craig also teaches in the interdisciplinary Sustainability Studies major and has research interests in corporate social responsibility and sustainability integration.

Lynette Dooley
Student
Lycoming College

Lynette is a senior at Lycoming College studying biology with a concentration in ecology and a minor in environmental science. She has been involved in the Sustainability Committee for 3 years and Head Coordinator for 1 year. Co-founder of the 50th Chapter of Food Recovery Network and the TerraCycle collection projects. Lynette will be graduating this December and is seeking an environmental science career.

Thomas Eatmon
Assistant Professor, Environmental Science
Allegheny College

TJ Eatmon is an Assistant Professor of Environmental Science at Allegheny College where he and his students created Food for Sustainability. The project utilizes aquaponic systems to produce tilapia and lettuce that is incorporated into the campus dining menu throughout the year. These activities have created partnerships across the campus and local community as well as opportunities for coursework, undergraduate research, and civic engagement. The program has gained regional and national recognition and Eatmon is currently working with his students to provide free consultation to schools and businesses across the country.

Erik Foley**Managing Director****Sustainability Institute, Penn State University**

As the Managing Director of the Sustainability Institute at Penn State, Erik has led a team focused on incorporating, for the first time ever, sustainability into university strategic planning and every college, campus and support unit.

Nick Iula**Director, Dining Services****Shippensburg University**

Always passionate towards our environment, Nick was a three year member of his high school's newly formed PAP Club (People Against Pollution). After three years biology study at Williams college, Nick switched tracks to study Culinary Arts and restaurant Management from Johnson and Wales. Nick has spent the last 8 years at Shippensburg University as their Director of Dining Services and member of the Environmental Steering Committee. Both he and his wife, Roberta are passionate about our environment and spend most of their vacation and leisure time, hiking, biking, foraging and exploring nature.

Allen Landis**Student****Villanova University**

Allen is a graduate student at Villanova University studying Sustainable Engineering. He graduated from Villanova with a B.S. in Environmental Science, and acted as the Co-Chair of the President's Environmental Sustainability Committee student sub-group. He is also an Engineering Officer in the Pennsylvania National Guard, serving with the 103rd Engineering Battalion. He has interests in sustainable energy solutions and efficient building design and construction.

Neil Leary**Director, Center for Sustainability Education****Dickinson College**

Neil is president-elect of the PERC Executive Committee and directs Dickinson College's Center for Sustainability Education, which promotes and facilitates collaborations to create sustainability learning opportunities in and out of the classroom. Neil teaches courses on climate change, campus greenhouse gas reduction, and sustainable communities and is the principal investigator for a NASA Global Climate Change Education project that partners Dickinson with community colleges to integrate climate literacy in the liberal arts. He has worked for 20 years on climate change vulnerability and adaptation and has participated in the science assessments of the Intergovernmental Panel on Climate Change since 1994.

Joshua Lewis
Student
Chatham University

Josh is a master of sustainability student at Chatham University in Pittsburgh PA. He recently graduated with a B.S. in environmental studies and minors in geographical information technology and nonprofit leadership from Slippery Rock University. Joshua's interest for sustainability can be traced back to his hometown in Lancaster PA where he saw urban sprawl and unsustainable development practices daily. This background has shaped his area of focus in sustainability, currently Josh is examining how multimodal transportation and land use planning can increase sustainability in urban areas.

Patricia L. Lione
Senior Director, College Administration
Keystone College

As the Senior Director of College Administration at Keystone College, Patricia is the liaison with College business partners. She also has responsibility for risk management on campus including campus safety, and for Student Business Services. In her twenty year career with the College she has served as implementation project manager for the administrative software system and chairs several standing committees. Patricia earned a Bachelor of Science in Information Technology from Keystone College.

Anthony Magliozzi
Student
Penn State University

I am a senior at Penn State studying Energy Engineering with a minor in Energy Business and Finance. I have helped in starting a business, Mavuuno Greenhouses, funded by EPA grants in East Africa with eight other students. Also, I am the Vice President of the Penn State Microfinance Initiative and an intern for the National Energy Leadership Corps.

Michael Mann
Distinguished Professor, Meteorology
Director, Penn State Earth System Science Center
Penn State University

Dr. Mann received his undergraduate degrees in Physics and Applied Math from the University of California at Berkeley, an M.S. degree in Physics from Yale University, and a Ph.D. in Geology & Geophysics from Yale University. His research involves the use of theoretical models and observational data to better understand Earth's climate system.

Dr. Mann was a Lead Author on the Observed Climate Variability and Change chapter of the Intergovernmental Panel on Climate Change (IPCC) Third Scientific Assessment Report in 2001 and was organizing committee chair for the National Academy of Sciences Frontiers of Science in 2003. He has received a number of honors and awards including NOAA's outstanding publication award in 2002 and selection by Scientific American as one of the fifty leading visionaries in science and technology in 2002. He contributed, with other IPCC authors, to the award of the 2007 Nobel Peace Prize. He was awarded the Hans Oeschger Medal of the European Geosciences Union in 2012 and was awarded the National Conservation Achievement Award for science by the National Wildlife Federation in 2013. He made Bloomberg News' list of fifty most influential people in 2013. In 2014, he was named Highly Cited Researcher by the Institute for Scientific Information (ISI) and received the Friend of the Planet Award from the National Center for Science Education. He is a Fellow of both the American Geophysical Union and the American Meteorological Society.

Dr. Mann is author of more than 170 peer-reviewed and edited publications, and has published two books including *Dire Predictions: Understanding Global Warming* in 2008 and *The Hockey Stick and the Climate Wars: Dispatches from the Front Lines* in 2012. He is also a co-founder and avid contributor to the award-winning science website RealClimate.org.

Mariah Murphy
Student
Dickinson College

Mariah is a senior chemistry major at Dickinson College and is interested in pursuing a career in geochemistry. Mariah started volunteering in the Handlebar bike co-op her first year of college. She started working for Dickinson's Center for Sustainability Education (CSE) as the Eco-Reps Supervisor her sophomore year, then became the Biking@Dickinson Intern for CSE in the Fall of 2013. Within this internship, she runs the Handlebar and manages its volunteers, oversees the Green Bikes program which builds and maintains a fleet of 60 bikes to loan out each semester, plans biking events, and works to expand the bike culture across campus.

Liesel Schwartz
Sustainability Manager
Villanova University

As the sustainability manager for Villanova University, Liesel works on campus sustainability issues that relate to operations, student engagement and academics. Before coming to Villanova, she worked at the architecture firm, SWBR architects, in Rochester NY as their sustainability Planner. Liesel has a Sustainability Planning and Development degree from the University of Rochester.

Thomas Simpson
Sustainability Coordinator
Franklin and Marshall College

Tom was born and raised in Lancaster, PA. He graduated from Delaware Valley College with a B.S. in Horticulture and taught science, math, and physical education at schools in Lancaster, Lebanon, and Milan, Italy. Following his return to Lancaster after 23 years in Italy in he has served as the Millport Conservancy Liaison and now as Sustainability Coordinator at Franklin and Marshall College. He has two grown children and lives in Lancaster city with his wife Daniela.

Sadie Stuart
Student
Allegheny College

I am a senior at Allegheny College, majoring in Environmental Science and minoring in Economics. I am a 4-year player on the Allegheny College Softball Team, I have served as secretary of Allegheny's Student Athletic Advisory Committee for 2 years, and work with the athletic training staff for our football team. For my senior thesis project I have combined my interests in sustainability and my involvement in sports to examine environmental and economic costs incurred due to travel by the softball team. In addition, I'll be examining the possibility of forming a new athletic conference that is less travel dependent for Allegheny College athletics.

Helen Takacs
Associate Professor
Dickinson College

C. Helen Takacs, PhD is an associate professor in International Business & Management at Dickinson College. Her primary research interests relate to corporate social responsibility and business sustainability. She teaches electives in this area as well as the introductory business course and the capstone course in business strategy. Helen is currently leading Dickinson's efforts to develop a curricular program for students in social innovation and entrepreneurship. Helen's passion for social justice and keen interest in the natural world inform both her research and her teaching.

Jessica Wallace
Campus Farm Coordinator
Shippensburg University

In addition to her role as Shippensburg's Campus Farm Coordinator, Jessica is currently enrolled in their Graduate Social Work program. She graduated from Dickinson College in 2011 where she studied psychology and sociology, which led to her interest in food justice and farming. She has worked on an organic, sustainable vegetable farm in East Berlin, PA and now works at Roots Cut Flower

Farm in Carlisle, PA. She enjoys the physical and mental challenges that farming presents, but most of all the connectedness that farming provides with those you are working with, your community, and nature itself.

Jessica Wallace
Campus Farm Coordinator
Shippensburg University of Pennsylvania

In addition to her work as the Campus Farm Coordinator for Shippensburg, Jessica is currently enrolled in their Graduate Social Work program. She graduated from Dickinson College in 2011 where she studied psychology and sociology, which led to her interest in food justice and farming. She has worked on an organic, sustainable vegetable farm in East Berlin, PA and now works at Roots Cut Flower Farm in Carlisle, PA. She enjoys the physical and mental challenges that farming presents, but most of all the connectedness that farming provides with those you are working with, your community, and nature itself.

Jenny Wittann
Student
Chatham University

Jenny is a Master of Sustainability student at Chatham University, Pittsburgh, with a Swedish-German background. She holds a B.A. in Scandinavian Studies and a B.S. in Business Administration from Humboldt University, Berlin. Her interests are sustainable business practices and transdisciplinary collaboration with a strong focus on project management and stakeholder engagement. Currently, she is studying approaches to effectively implement corporate responsibility, enabling her to eventually become a sustainability officer in a multinational corporation.

Sponsor Information

Sustaining Annual Sponsor PHE-FRC Funding Sponsor



When it comes to supporting educational mission and sustainability goals, Sodexo is a strategic partner that can ensure exceptional student experiences by delivering essential quality of life services. Sodexo is a recognized leader for improving their partners' performance by managing important services such as healthy, delicious dining and attractive, clean and comfortable environments that support successful learning around key areas such as planet, health, community and people.

From a welcoming environment in all of our locations, to energy efficient buildings and innovative offers in a variety of venues, Sodexo's goal is to ensure the success of their partners by providing Quality of Life services tailored to each of their specific goals, while aligning them with PERC's sustainability objectives.

For more information, please visit our website at www.sodexo.com

Gold Annual Sponsor



PaceControls, a DOE- and Ben Franklin Technology Partners-funded company and ENERGY STAR Partner, has become the industry leader in energy efficiency and smart grid retrofit solutions for HVACR applications. Our easy-to-install, patented, made in USA PACE product suite delivers energy savings of 15%-20%+ on an extraordinarily wide array of existing and new commercial heating, cooling and selected refrigeration equipment. In addition, we deliver breakthrough demand response and RCx features with PACE Cloud analytics that can be ported into any building management system (BMS), wired or wireless. PaceControls is proud to be a part of the DOE Energy Efficient Buildings Hub/Consortium for Building Energy Innovation at the Philadelphia Navy Yard.

The PACE product suite -- with 16,000+ installations -- delivers energy savings additive to most other energy efficiency measures, via its patented technology and is OEM compliant (2 OEM VAR partners to date). Most commercial PACE projects have paybacks of 12-36 months -- even before energy-efficiency rebates -- are rebate-eligible nearly everywhere EE rebates are offered -- and are now being offered by utility programs.

The PACE product suite is UL Listed and made in USA via a robust, highly scalable supply chain, and can be fitted onto most existing HVAC units by any HVAC technician. PACE performance has been documented by 60+ independent and supervised metered trials and controlled laboratory tests throughout 2005-2014. Current customers include AT&T, CBRE (world's largest property manager), Jones Lang LaSalle, Southern California Edison (2 sole-specified programs), State of Illinois (no-cost Direct Install program for municipalities), major retail and bank chains, as well as numerous government and educational entities.

More information is available at www.pacecontrols.com

Gold Annual Sponsor



Under the leadership of its founders, and with cooperation from PERC's Member Schools, Community Energy, Inc. (CEI) built the voluntary market for renewable energy, spurring the demand for hundreds of Megawatts of new wind generation ahead of state mandates. CEI currently delivers renewable energy to over 120,000 customers through direct sales and 21 partnerships with electric utilities and suppliers.

Community Energy is constructing Keystone Solar, a 5 MW solar project in Lancaster County. As part of a special PERC/ Community Energy program, several PERC schools, including F&M, Eastern and Millersville have taken leadership roles and contracted to purchase solar power from the project.

More information about Community Energy is available on the web at www.communityenergyinc.com

Gold Annual Sponsor



PERC Gold Sponsor Waste Management, Inc., based in Houston, Texas, is the leading provider of comprehensive waste management services in North America. Through its subsidiaries, the company provides collection, transfer, recycling and resource recovery, and disposal services. It is also the largest residential recycler and a leading developer, operator and owner of waste-to-energy and landfill gas-to-energy facilities in the United States. In addition to higher education, the company's customers include residential, commercial, industrial, and municipal customers throughout North America.

Waste Management has implemented programs specifically targeted at helping higher education increase sustainability. For more information, go to www.wm.com/enterprise/college-and-university

Silver Annual Sponsor



PERC Silver Sponsor Schneider Electric's Energy & Sustainability Services provides energy management and sustainability services to organizations in a wide range of industries, including higher ed. Schneider Electric has experience with organizations worldwide assisting them to manage their energy consumption and spend on both sides of the utility meter. Through comprehensive energy efficiency services, colleges and universities are offered unique ways to 'right-size' their energy use, and then utilize Schneider Electric's market expertise to procure cost-effective and sustainable energy commodities. Schneider Electric's team manages more than \$20 billion in annual energy spend for more than 650 companies and thousands of facilities. Furthermore, Schneider Electric has been selected as the Administrator of the services provided through the Pennsylvania Public Entity Energy Consortium (PPEEC), www.ppeec.org. This is a consortium that is focused on providing public entities with buying power and valuable energy procurement services through a member-run, not-profit organization.

Schneider Electric challenges organizations to view energy and sustainability issues strategically, ensuring that all decisions support the financial and operational integrity of your business.

Schneider Electric has partnered with PERC on a Renewable Energy Promotion program. Like with many an affinity program, PERC Member Schools are offered a discount on energy procurement services; unlike other programs, the amount of the discount increases as the percent of renewable energy increases. The greater the portion of your energy that comes from renewable sources, the greater the discount on these services.

Find out about the specifics of the PERC/ Schneider Electric Program from William Oppenheim by contacting him at william.oppenheim@ems.schneider-electric.com.

At Sodexo, we understand the best way to have a better today *and* a better tomorrow is to be proactive for your health, for your community, for your planet *and* for our people.

Your dining experience is more than great food just like sustainability is more than simply saying we are going “green.” Being a responsible corporate citizen is at the core of Sodexo's business. We set the benchmark in areas such as sustainability, diversity and inclusion, wellness, and the fight against hunger. We are now taking our leadership to the next level with a sustainability plan that will affect 80 countries, 30,600 sites, and our 380,000 employees. We call this “The Better Tomorrow Plan.”

Sodexo
is proud to
sponsor and
partner with PERC.

www.Sodexo.com
www.tomorrowstarts2day.com

sodexo
QUALITY OF LIFE SERVICES



We put our energy into the environment.

At PECO, we're committed to reducing our carbon footprint and preserving the environment. That's why we contribute more than \$500,000 in support of local environmental programs. We're also doing our part with a new green roof at our Main Office Building, by driving a fleet of hybrid trucks, and installing a new, energy efficient LED Crown Lights system.

Find out more at www.peco.com/green
© PECO Energy Company, 2009



PaceControls

PaceControls, part of the Consortium for Building Energy Innovation at the Philadelphia Navy Yard and providers of smart grid energy-saving technology, is pleased to help PERC build sustainability on campus and in the larger community.

Schneider Electric

A world where we can achieve more while
using less of our common planet.

<https://www.facebook.com/SchneiderElectricUS>

Schneider Electric is a
proud sponsor of PERC

Schneider Electric's SE TV!
Hundreds of video clips and educational
pieces that provide information regarding
Schneider Electric's services and products.

<http://tv.schneider-electric.com>



Energy University Website!



Energy University is a FREE, online, educational
resource, offering more than 200 vendor-neutral
courses on energy efficiency and data center top-
ics to help you identify, implement, and monitor
efficiency improvements within your organization.

<http://www.schneider-electric.com/energyuniversity>



**COMMUNITY
ENERGY®**

building a clean energy future

The Keystone Solar Project: Made possible by a partnership with PERC



For more information, contact Byron Woodman at Byron.Woodman@CommunityEnergyInc.com.

www.CommunityEnergyInc.com